

Delivering 'The Golden Thread' Dataset Using Data Mesh Concepts

Supporting Housing & Community Development

<https://cloudformations.org>

contactus@cloudformations.org

[In/CloudFormations](https://www.linkedin.com/company/cloudformations)

[@CloudFormsLtd](https://twitter.com/CloudFormsLtd)

[CloudFormationsLtd](https://www.facebook.com/CloudFormationsLtd)



Cloud Formations have partnered with a **G15 Housing Association** to pioneer a solution that not only embraces the 'Golden Thread' use case but also revolutionises the Microsoft Data Platform landscape.

What is the Golden Thread? Building Regulations Advisory Committee: golden thread report. See full article: bit.ly/ref-article



The Challenge

The Housing Association industry's data landscape often resembles a labyrinth, hindering insights and innovation. Our client, a leading housing association, faced a critical challenge – how to harness their data unlocking the potential for transformative outcomes while navigating the complexities of the 'Golden Thread' use case. Amongst other business critical deliverables.

The Technology Stack

Using Microsoft Azure cloud native resources, a data mesh architecture is being designed using the following compute and storage components:

- Data Lake
- Data Factory
- Databricks
- SQL Database
- Purview
- Functions
- Microsoft Fabric
- Power BI

All connect and leading to the use of governance as an enabler to do more with data safely.

Data Mesh Principles

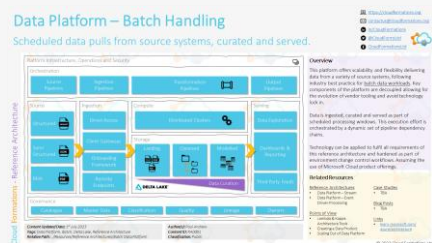
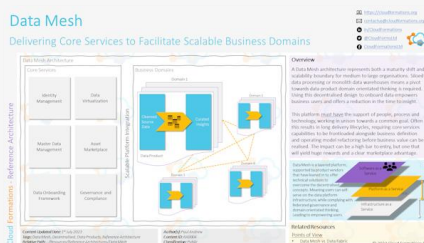
The principles of a data mesh are well defined within the technical community, but often left open to interpretation for businesses seeking to apply them.

- Domain-oriented decentralised data ownership and architecture.
- Data as a product.
- Self-serve data infrastructure as a platform
- Federated computational governance.

With industry leading expertise, Cloud Formations are designing an architecture to embrace these principles. Delivering critical use cases and ensuring solid, scalable foundations for the next technical challenges.

See Also

Our Data Mesh Reference Architecture, plus others (inspired by this project work). bit.ly/cf-refarch



Outcome

Design a future proof, decentralised data mesh architecture to serve all data requirements across the business, including support for the 'Golden Thread' use case. A platform that will empower business users, unlock value in data assets, federate data governance, feed the overall business data strategy and re-organise siloed data products.

Next Steps

Reach out to learn more about how we could implement this architecture in your organisation via the contact details (top right) or please book some time in our calendar via the following link: bit.ly/cf-bookings

Our Services

- Data Strategy
- Architecture Review & Oversight
- Data Culture & Adoption
- AI Strategy & Consulting
- Data Mesh & Fabric Adoption
- Data Science as a Service
- Training

